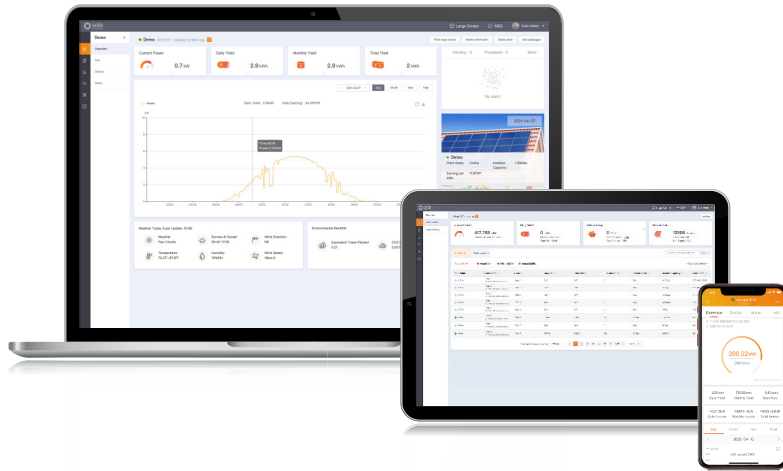


## SolisCloud

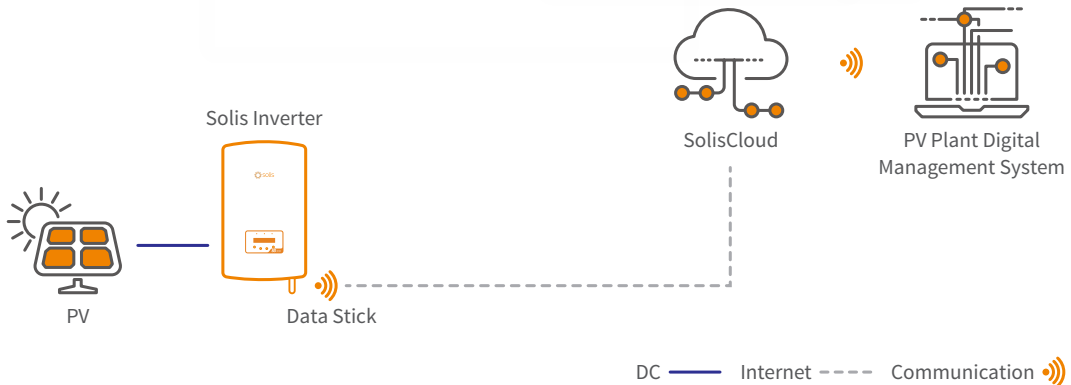
# New generation Solis PV monitoring platform

SolisCloud is the new generation of intelligent PV system monitoring. This new monitoring platform will empower you like never before. You will have full control of your system whenever and wherever you are. You will benefit from upgraded accurate fault alarm messaging that is adjustable to notify you within hours that fit meet your needs.

For simple O&M the new platform features a full size display of all your installations with real-time data. You will have an intelligent alarm system that gives recommendations to quickly repair your field faults. In depth analysis tools allow you to understand the overall health of your system. IV curve scanning can be done easily and quickly on your whole system. A live power flow display gives visibility of both standard solar systems as well as storage systems. Most importantly you will have complete control of your systems and be able to monitor and adapt anything when and how you want.



### Intelligent Monitoring Solution - SolisCloud



### Advanced Cloud Platform

- Connecting with multiple types of devices seamlessly: Inverters, export power managers, weather stations, etc.

### Efficient O & M

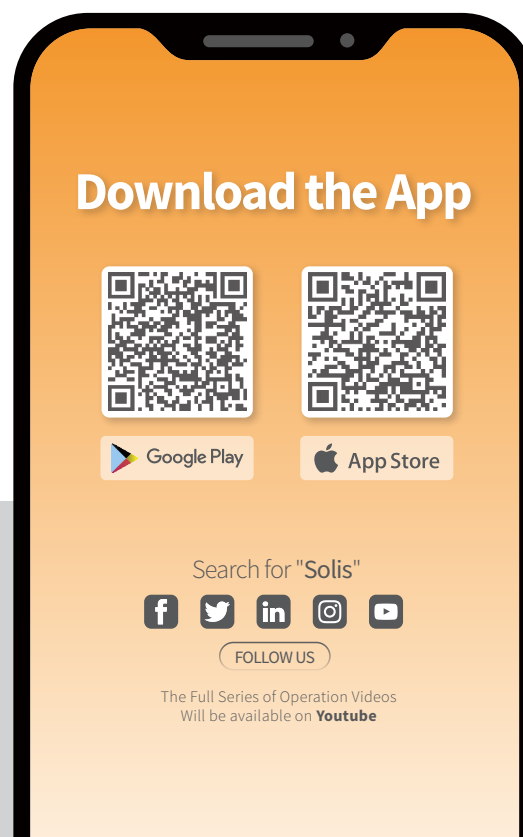
- Smart I-V curve scan, system health report, string-level fault finding

### Multiple Plant Management

- Manage multiple types of systems across residential, commercial and utility scale plants.  
Enables multiple team management across different sectors

### Full Screen Display Mode

- Clear and concise display of system performance and benefits including carbon emissions saved and equivalent trees planted as well as showing system yield & earnings



### Accessories available:

- |                 |                |
|-----------------|----------------|
| S2-WL-ST        | S3-Logger      |
| S3-GPRS/WiFi-ST | S2-PLC-CCO     |
| S1-W4G-ST       | Solis-Link: RF |
| S4-WiFi-ST      |                |